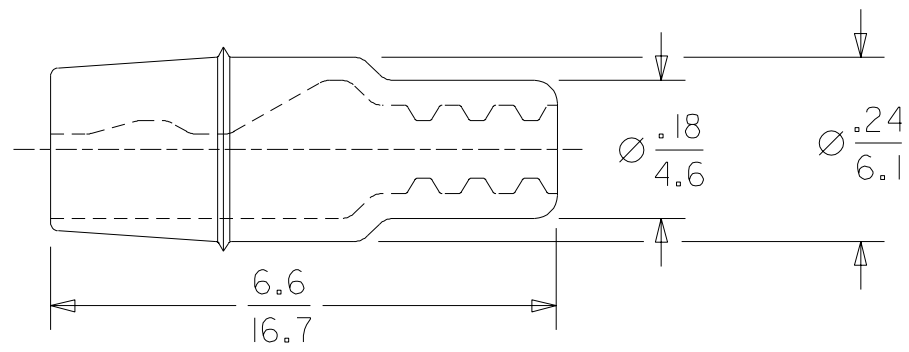
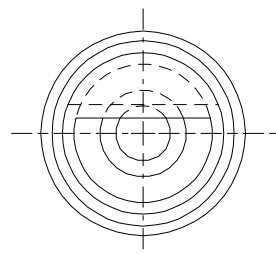


METERIAL NUMBER	ENGINEERING NUMBER
1916100333	SPP-1



SALES DRAWING

FORMATT CHG EC NO. ETC2004-0035 DRWN: BRE 03/08/08 CHK: HEB 03/08/08 APPR: RWD 03/08/08	QUALITY SYMBOLS MAJOR $\blacktriangledown = 0$ CRITICAL $\nabla c = 0$	GENERAL TOLERANCES: (UNLESS SPECIFIED)	SCALE 4:1 DESIGN UNITS <input type="checkbox"/> mm <input checked="" type="checkbox"/> INCH	DIMENSIONS: <input type="checkbox"/> mm <input checked="" type="checkbox"/> INCH <input type="checkbox"/> mm ONLY	SHT REV
	DESCRIPTION	mm INCH	DRAWN BY & DATE JH 00/05/19	TITLE: SPLASH PROOF INSULATOR MALE SNAP PLUG 22-14 AWG	
	REV	4 PLACES $\pm 0.$ $\pm .$ 3 PLACES $\pm 0.$ $\pm .$ 2 PLACES $\pm 0.$ $\pm .025$ 1 PLACE ± 0.18 $\pm .$	CHECKED BY & DATE RWD 00/05/19	MOLEX INCORPORATED	
	DRAFT WHERE APPLICABLE MUST REMAIN WITHIN DIMENSIONS	ANGULAR: $\pm 1/2^\circ$	APPROVED BY & DATE RWD 00/05/19	CAD FILENAME 19161024.DGN	MATERIAL NO. SEE CHART