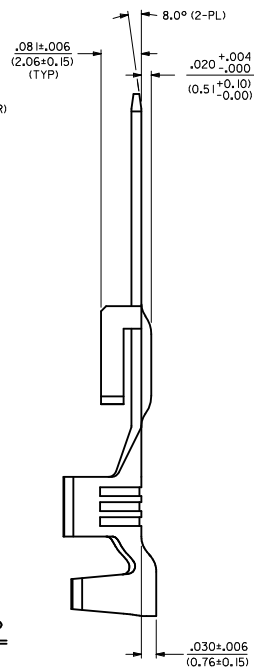
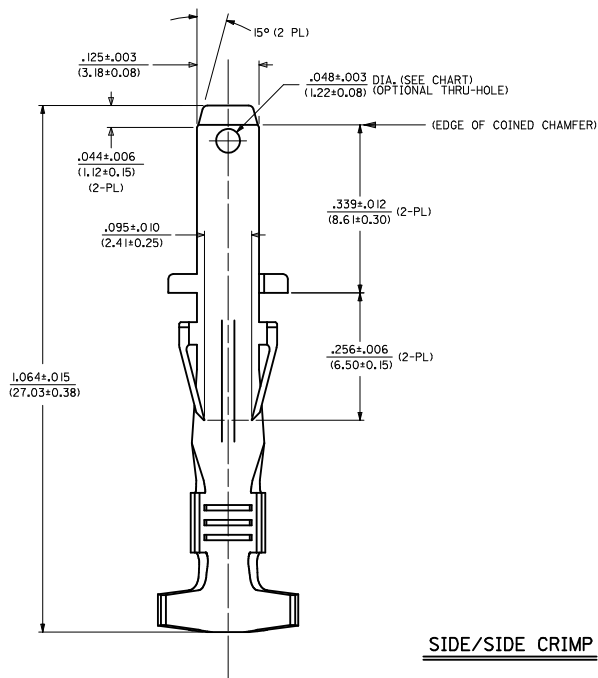
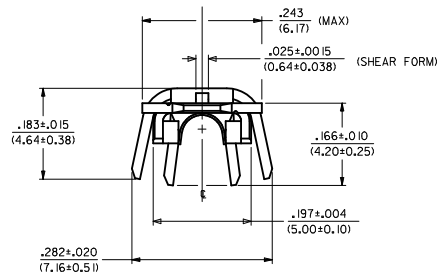


MATERIAL NUMBER	FINISH	HOLE
43178-3001	999	NOT USED
43178-3002	H901	NOT USED
43178-3003	F542	NOT USED



SIDE/SIDE CRIMP

NOTES

- MATERIAL: BRASS
- FINISH:
999 - UNPLATED
H901 - 20 MICROINCH MIN. HOT TIN DIP
F542 - 15 MICROINCH MIN. SELECT GOLD IN CONTACT AREA,
50 MICROINCH TIN-LEAD IN CRIMP AREA,
NICKEL UNDERPLATE OVERALL.
- PRODUCT SPECIFICATION: PS-44441-001
- TERMINAL FOR USE WITH:
DOUBLE 18 AWG. UL 1015 STYLE WIRE (CRIMPED SIDE X SIDE)

REVISE NOTE #4 IEC NO. UCP2010-2241 DRAWN: HAH 2010/03/03 CHYK: JRELL 2010/03/03 APPR: FSWITH 2010/03/17	QUALITY SYMBOLS ▽=0 ▽=0 ▽=0	GENERAL TOLERANCES (UNLESS SPECIFIED)		DIMENSION STYLE IN/MM		SCALE 8:1	DESIGN UNITS INCH	THIRD ANGLE PROJECTION	
		4 PLACES ± --- ± ---	mm INCH	DRAWN BY MAB	DATE 1995/06/16	TITLE TERMINAL, CRIMP MALE TAB .125/(3.18)X.020/(0.51) SABRE - F.B.S. - T.P.A.			
		3 PLACES ± --- ± .010		CHECKED BY KBP	DATE 1995/06/16	MATERIAL NO. SEE CHART			
		2 PLACES ± 0.25 ± .014		APPROVED BY FSMASH	DATE 2010/09/16	DOCUMENT NO. SD-43178-3***			
		1 PLACE ± 0.35 ± ---		ANGULAR ± 1/2°		MOLEX INCORPORATED		SHEET NO. 1 OF 1	
DRAFT WHERE APPLICABLE MUST REMAIN WITHIN DIMENSIONS		THIS DRAWING CONTAINS INFORMATION THAT IS PROPRIETARY TO MOLEX INCORPORATED AND SHOULD NOT BE USED WITHOUT WRITTEN PERMISSION							